

FTA™ cards

The easy way to collect cattle DNA and improve the value of your herd

DNA is fast becoming the preferred means of improving herd quality, making genetic testing a necessity for the modern beef producer. Fortunately, GE Healthcare has developed a simple way to make DNA work for you. With Whatman™ FTA cards (Fig 1.), you can store an animal's genetic information with a single drop of blood, making it easy to prove calf lineage, track desirable traits, and improve the value of your herd through superior breeding.



Fig 1. Whatman FTA blood stain card.



Fig 2. Application of Whatman FTA provides you with a simple and fast way to join the DNA revolution.

What is Whatman FTA?

Whatman FTA cards are made of a chemically-treated paper that extracts the DNA from a blood sample. Simply place a drop of blood on the card and your cattle DNA is instantly captured. FTA cards can be mailed to a lab for analysis, or stored indefinitely at room temperature, providing you with instant access to your herd's (Fig 2.) genetic information.



You do not have to be a scientist to use FTA Cards

As a beef producer, the quality of your herd is your number one priority. By identifying and breeding in positive traits like marbling and tenderness, you will improve your herd's value and increase profits. To help you take advantage of DNA technology, GE Healthcare is committed to making DNA collection, and analysis by testing labs, as simple as possible. FTA cards are so easy to use, anyone on your ranch can get started right away without special training. For step-by-step instructions visit www.whatman.com/animal_ID.

Collecting blood samples

It is easy to take samples from the ear, tail or neck (Fig 3.)

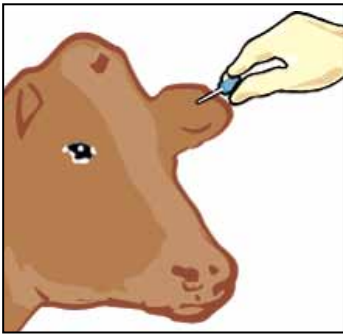


Fig 3A. The back side of the ear is rich in blood vessels that can be found by massaging the skin. Prick the blood vessel using the smallest needle you have available.

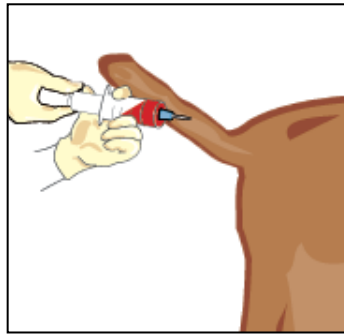


Fig 3B. Blood can be collected from the underside of the tail using a syringe.

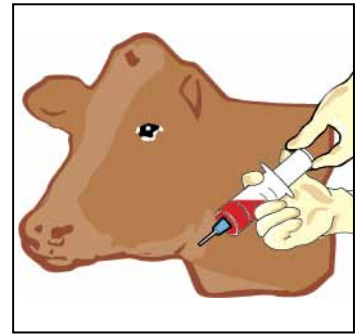


Fig 3C. Use a syringe to extract blood from the underside of the neck. No matter where you collect the blood, make sure the animal's head is properly restrained.

How FTA works

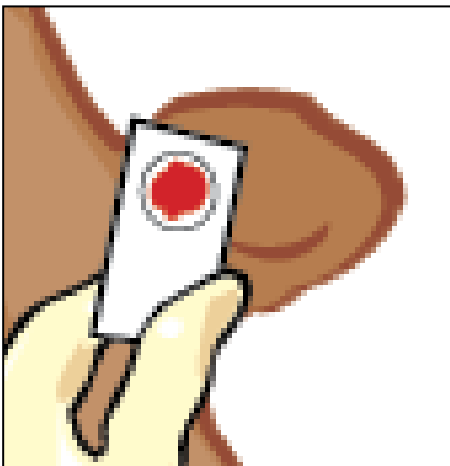


Fig 4A. A drop of blood is applied to an FTA card. Blood cells, which contain DNA, are captured in the chemically-treated fibers of the card.

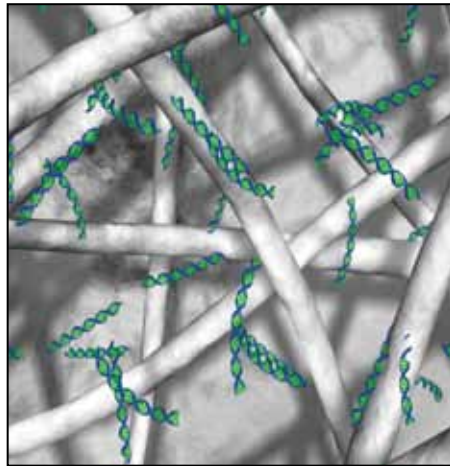


Fig 4B. A commercial laboratory can extract the cattle DNA from the FTA card, analyze it, and send you the results. Here, DNA strands are shown on an FTA card.



Fig 4C. Cards can be stored on the ranch at room temperature. FTA keeps your cattle DNA safe and secure for years without refrigeration.

Whatman FTA cards are suitable for:

- Breed registration and certification
- Identifying superior breeding traits
- Increasing the value per head of animals with the best genetic characteristics, such as marbling and tenderness
- Verifying breed types so you can buy and sell with confidence
- Keeping track of specific cattle on the ranch—a foolproof addition to ear tags, which can be lost
- Proving ownership of stray cattle
- Parentage testing

Why use FTA cards?

- Easy field collection
- No need to hire skilled personnel to collect samples
- By breeding animals based on their genetic traits, you will sell desirable cattle at a higher price
- Room temperature storage means you will always have access to your herd's genetic information
- FTA is a proven technology trusted by genetics labs worldwide



Fig 5. FTA blood stain cards.

Now every beef producer can take advantage of the latest genetic technology and make more money

Ready to get started?

Contact GE Healthcare today. Our genetic experts are ready to help you build your business by harnessing the power of DNA on your ranch. You will soon find that Whatman FTA is a fast, easy and cost-effective way to track genetic traits within your herd and breed the very best cattle for higher profits. Whatman FTA—it is the DNA brand for the 21st century.



Fig 6. Whatman FTA cards are available in a range of configurations to meet your needs.

www.gelifesciences.com/whatman

GE Healthcare UK Limited
Amersham Place
Little Chalfont
Buckinghamshire, HP7 9NA
UK



Fig 7. Whatman FTA cards can store an animal's genetic information with a single drop of blood.

GE, imagination at work and GE monogram are trademarks of General Electric Company.

FTA and Whatman are trademarks of GE Healthcare companies.

© 2005-2010 General Electric Company – All rights reserved. Previously published June 2005.

All goods and services are sold subject to the terms and conditions of sale of the company within GE Healthcare which supplies them. A copy of these terms and conditions is available on request. Contact your local GE Healthcare Representative for the most current information.

GE Healthcare Bio-Sciences AB
Björkgatan 30
751 84 Uppsala
Sweden

GE Healthcare Bio-Sciences Corp.
800 Centennial Avenue
Piscataway, NJ 08855-1327 USA

GE Healthcare Europe, GmbH
Munzinger Strasse, D-79111 Freiburg
Germany

GE Healthcare Japan Corporation
Sanken Bldg., 3-25-1, Hyakunincho
Shinjuku-ku, Tokyo 169-0073
Japan

