

Whatman FTA[®] for Total RNA

Collect, transport, store
and purify Total RNA.

Whatman FTA[®] provides a remarkably fast and easy way to prepare Total RNA from a variety of samples for molecular analysis. Simply apply blood, cultured cells, leaf press or other samples to the FTA matrix. Nucleic acids are instantly captured and stabilized, while pathogens and nucleases are inactivated. Safe shipment and storage of samples available for when you are ready to analyze. Easily purify RNA for RT-PCR. Try FTA, and you'll soon find it's an indispensable part of your Molecular Biology toolbox.

Features and Benefits

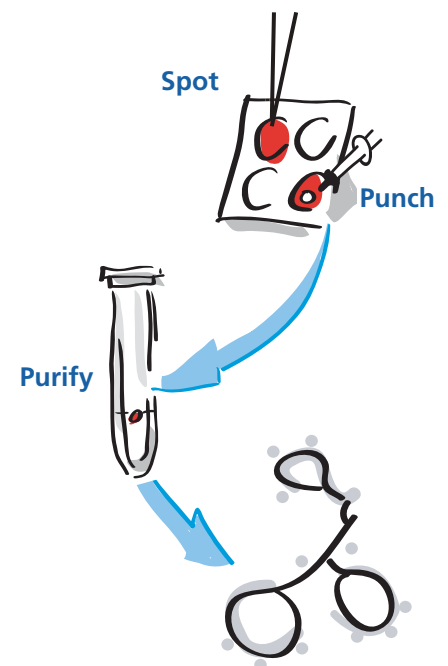
- **RNA suitable for Reverse-Transcriptase (RT)-PCR and Northern Blot Analysis** RNA purified using FTA can serve as a template for RT-PCR analysis directly in solution, or can be precipitated and loaded on an agarose gel for Northern Blotting.
- **Simple collection** Samples are applied directly to the FTA matrix. Nucleic acids are automatically stabilized and protected for short term storage at room temperature and longer term storage at -20°C or -70°C.
- **Safe room temperature storage and shipping** FTA inactivates potentially harmful pathogens making samples safe for routine laboratory handling and shipping.
- **Fast purification** RNA is eluted from the FTA Card in one simple wash step, all in a single tube at room temperature. No toxic chemicals required. RNA is eluted from the matrix, ready for RT-PCR.
- **Fits your method** There's no need for further purification with time consuming phenol/chloroform methods, digestion steps or tissue grinding.

Applications

- **Research applications**
 - RT-PCR
 - Northern Blotting
- **Gene expression**
- **Real-time PCR**

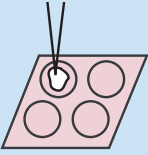


Three easy steps to Total RNA




Whatman[®]

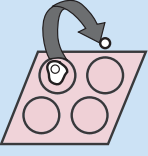
FTA TOTAL RNA PROTOCOL OVERVIEW




Sample Application
Apply sample to the FTA Card. Allow to dry completely.



RNA Processing Buffer Elution
Add RNA Processing buffer, incubate on ice.



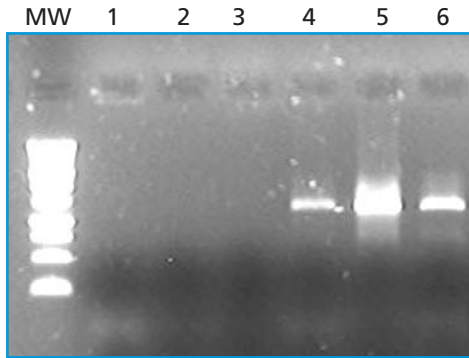
Disk Removal
Punch a disk out of the sample on the FTA Card and place in 1.5 mL tube.



RT-PCR or Northern Blot
Use RNA directly for RT-PCR or precipitate for Northern Blot analysis.



RT-PCR from FTA: RNA from HL60 cells extracted with FTA or Competitor T



- Lane 1 & 2: PCR using RNA from FTA (no DNA contamination).
Lane 3: Negative Control (no template).
Lane 4: PCR using RNA from Competitor T (DNA contamination).
Lane 5: PCR using positive control K562 DNA.
Lane 6: RT-PCR using RNA from FTA.

WHATMAN CATALOG ORDERING INFORMATION

Whatman Catalog Number	Standard Unit	Qty./Pack
WB120061	FTA Starter Pack	1
WB120205	FTA Classic Card (non-indicating)	100
WB120206	FTA Classic Card (indicating)	100
WB120055	FTA Mini Card (non-indicating)	100
WB120056	FTA Mini Card (indicating)	100
WB120210	FTA Micro Card (non-indicating)	100
WB120211	FTA Micro Card (indicating)	100
WB120208	FTA Gene Card	100
WB100007	Harris Micro Punch 2.0 mm	1
WB100008	Harris Micro Punch 2.0 mm Tip	1
WB100029	Harris Uni-core 2.0 mm Punch	4
WB100010	Multibarrier Pouch (large)	500
WB100011	Multibarrier Pouch (small)	500
WB120216	FTA Gene Card/pouch/desiccant	1000
WB120217	FTA Classic Card/pouch/desiccant	1000
WB100026	2.0 mm Replacement Plunger	1
WB100003	Desiccant	1000
WB100016	FTA Card Mailer	50
WB100020	Replacement Cutting Mat	1
WB100030	FTA Gene Card Carrier	20

Whatman Quality

Whatman is a global leader in separations technology and is known in the scientific community for providing innovative Life Science products and solutions. Our instinct for simplification accelerates the rate of discovery, reduces costs and saves time. In order to focus on the unique needs of customers, Whatman is organized into four business development units: LabSciences, BioScience, MedTech-Diagnostics and MedTech-Devices. For more information, visit www.whatman.com.

Whatman and FTA are registered trademarks of the Whatman Group.

North America Whatman Inc.
200 Park Avenue
Florham Park, NJ 07932 USA
Technical Support: 1-800-922-0361
Customer Service: 1-800-631-7290
E-mail: info@whatman.com

Europe Whatman International Ltd
Springfield Mill, James Whatman Way
Sandling Road, Maidstone
Kent ME14 2LE UK
Tel: + 44 (0)1622 676670
Fax: + 44 (0)1622 691425
E-mail: information@whatman.com

Japan Whatman Japan KK
Daiwa Ueno Building 1F 6-10
Ueno 5-chome, Taito-ku
Tokyo 110-0005, Japan
Tel: +81 (0)3 3832 6707
Fax: +81 (0)3 3832 6457
E-mail: japaninfo@whatman.com

Asia Pacific Whatman Asia Pacific Pte Ltd
171 Chin Swee Road
#08-01 San Centre
Singapore 169877
Tel: +65 6534 0138
Fax: +65 6534 2166
E-mail: wap@whatman.com

Whatman®

Leaders in Separations Technology
www.whatman.com