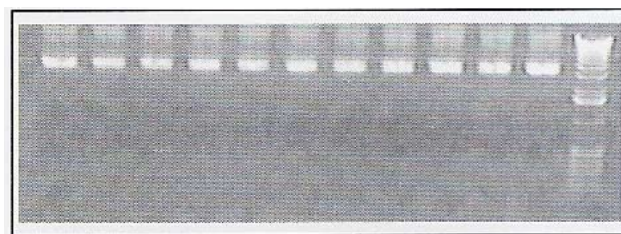


# Lysate Clarification Plate

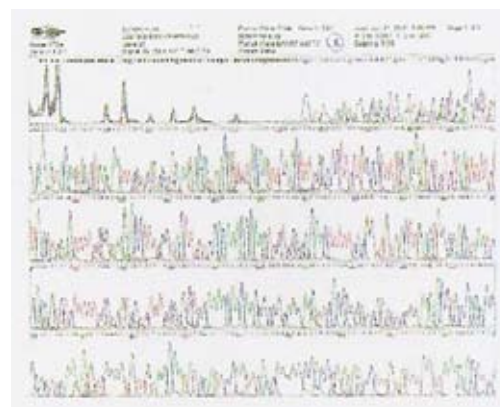
Lysate clarification is traditionally a difficult and time-consuming step in any “miniprep” process. Typically carried out by the centrifugation of single tubes or in a multiwell device, clarification has become a bottle neck in many high throughput labs. Whatman has developed a dedicated plate for lysate clarification that can be used with either a vacuum manifold or centrifuge. The vacuum process is consistent across all wells and is significantly easier to automate. It also has an average DNA recovery rate 10 to 30% higher than manual centrifuge methods. This method filters out cell debris to obtain clean DNA in an aqueous phase. Centrifugation methods leave much of the aqueous material behind to avoid disturbing the pellet (when pipetting) and contaminating the lysate. The Whatman filter manufacturing technology produces a task-specific plate that offers high particle retention and fast flow rates while producing a clean lysate. Optimized in our own laboratories, the Lysate Clarification Plate is an important tool for high throughput plasmid DNA purification.

- Process 96 lysates in less than 10 min
- Enhances recovery of DNA using DNA Binding Plate
- Increase DNA recovery by 10 to 30%
- Consistent performance across all 96 wells
- User flexibility of using either centrifugation or vacuum
- 96 well format is easily automated

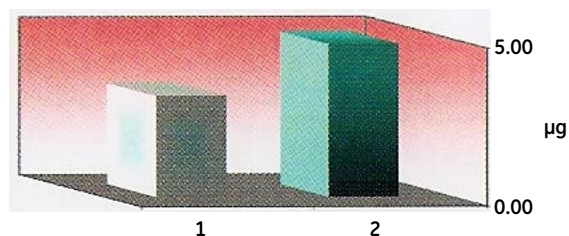
Full protocol at [www.whatman.com](http://www.whatman.com)



**Fig 1.** Consistent, high-reproducible yield of plasmid DNA on a 0.8% agarose gel.



**Fig 2.** Sample sequence information obtained by the Whatman DNA Binding Plate.



**Fig 3.** Whatman Lysate Clarification Plate increases average DNA yield. Pipette supernatant removal (1) vs. Whatman clarification filter plate method (2).



## Ordering information

Catalog number	Description	Quantity
7720-2830	800 µl Lysate Clarification Plate	25 per case
7770-0062	800 µl Lysate Clarification Plate 2 0.45 µm PP filter	25 per case
7701-5205	2 ml 96 Well Growth Plate, irradiated, lidded, individually bagged	25 per case
7700-2810	800 µl Plasmid DNA Binding Plate	25 per case
7701-5200	2 ml Collection Plate	25 per case
7701-5750	750 µl Harvest Plate	25 per case
7701-5250	250 µl Recovery Collection Plate	25 per case
7705-0102	800 µl UniVac 3 Vacuum/Collect Manifold	1 per box

GE Healthcare Bio-Sciences Corp.  
800 Centennial Avenue  
Piscataway, NJ 08855-1327 USA

For local office contact information, visit  
[www.gelifesciences.com/whatman](http://www.gelifesciences.com/whatman)



GE, imagination at work and GE monogram are trademarks of General Electric Company. Whatman is a trademark of GE Healthcare companies.

All third party trademarks are the property of their respective owners.

© 2009 General Electric Company – All rights reserved.

First published August 2009.

All goods and services are sold subject to the terms and conditions of sale of the company within GE Healthcare which supplies them. A copy of these terms and conditions is available on request. Contact your local GE Healthcare Representative for the most current information.

GE Healthcare Bio-Sciences AB  
Björkgatan 30  
751 84 Uppsala  
Sweden

GE Healthcare UK Limited  
Amersham Place  
Little Chalfont  
Buckinghamshire, HP7 9NA  
UK

GE Healthcare Europe, GmbH  
Munzinger Strasse 5, D-79111 Freiburg  
Germany

GE Healthcare Bio-Sciences KK  
Sanken Bldg., 3-25-1, Hyakunincho  
Shinjuku-ku, Tokyo 169-0073  
Japan