

New Whatman® FTA Concentrator-PS™

The parasite DNA
purification and
concentration solution.



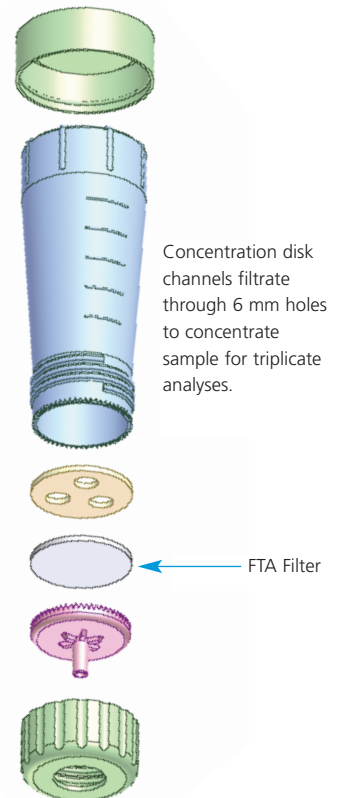
Developing methods to streamline and improve the accuracy of foodborne pathogen testing is critical to preserving the health and safety of the public. The new Whatman FTA Concentrator-PS offers significant benefits over currently available methods of foodborne parasite DNA purification and concentration. The FTA Concentrator-PS is designed for fast purification of parasite DNA in preparation for PCR[†] analysis. The new product combines concentration and purification into one step, speeding time to detection, and sensitivity is enhanced thanks to FTA® technology incorporated in the unit.

Features and Benefits

- **Speeds time to detection** Combines concentration and purification in one step to speed results.
- **Time- and cost-effective** Eliminates DNA template preparation steps.
- **Increases sensitivity** FTA technology supports detection of small numbers of organisms.
- **Effective** Patented chemical formula lyses cells on contact, entrapping DNA in the matrix.
- **Increases productivity** DNA is immediately ready for PCR analysis.
- **High quality DNA** FTA chemicals protect DNA from enzymatic degradation, environmental damage and fungal/microbial attack.
- **Safe** Infectious pathogens are inactivated after coming in contact with FTA coated matrices.
- **Eliminates errors** Capture method avoids problems typically associated with pathogen isolation and concentration and DNA template preparation.
- **Easy-to-use** No special skills required.

Applications

DNA purification from *Cryptosporidium* oocysts and *Cyclospora* in food or water sources.



Whatman®

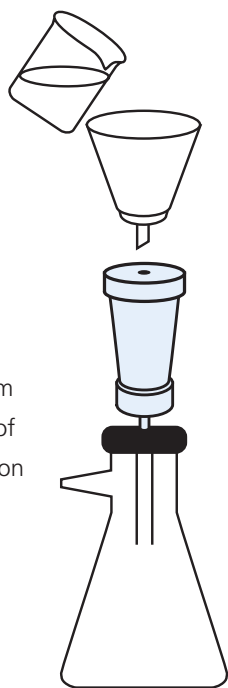
DESCRIPTION

The FTA Concentrator-PS™ can be used to quickly concentrate and prepare DNA from parasites or oocysts for PCR analysis. FTA filters in the concentrator funnel are impregnated with a patented chemical formula that lyses cell membranes and denatures proteins upon contact. Nucleic acids are immobilized and protected from UV damage and fungal and microbial attack. Infectious pathogens are inactivated after coming in contact with FTA coated matrices thus making the samples safe to handle. The FTA filter in the concentrator traps parasitic organisms and oocysts and lyses them, entrapping the DNA within the filter matrix. After washing the filter with FTA Purification Reagent to remove PCR inhibitors, disks are punched from the filter to serve as templates for amplification reactions to identify the organisms by molecular methods.

PROTOCOL



100 ml
maximum
volume of
suspension



Prefilter through a 47 mm funnel with Grade 4 paper

Filter through FTA Concentrator with low vacuum

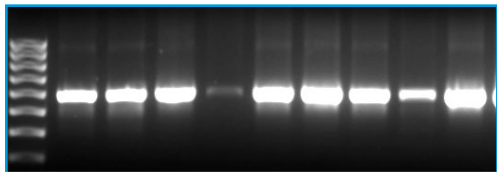
Wash twice with 10 mL FTA reagent

Wash twice with 10 mL TE⁻¹

Remove FTA disk and dry @ 50°C

Punch out 6 mm disks for PCR triplicate test

PCR ANALYSIS



1000 *Cryptosporidium* oocysts from IMS separation were passed over three FTA Concentrator-PS units. Triplicate punches were taken for nested PCR detection. Data courtesy of Dr. Palmer Orlando and Chris Frazer, FDA.

WHATMAN CATALOG ORDERING INFORMATION

Whatman Catalog Number	Product	Quantity/Case
WB120220	FTA Concentrator-PS	50
SWB120220	FTA Concentrator-PS Sample Kit*	5
WB120070	Disposable Filter Funnel, Grade 4	5

*Sample Kit contains 5 FTA Concentrator-PS funnels, 2 x 25 mL of FTA Purification Reagent, 6 mm Harris UniCore Punch, Instructions.



Whatman Quality

Whatman is a global leader in separations technology and is known in the scientific community for providing innovative Life Science products and solutions. Our instinct for simplification accelerates the rate of discovery, reduces costs and saves time. For more information, visit www.whatman.com.

Whatman and FTA are registered trademarks and FTA Concentrator-PS is a trademark of the Whatman Group.

[†]PCR is a patented process of Hoffmann-La Roche. Use of the PCR process requires a license.

North America Whatman Inc.
200 Park Avenue, Suite 210
Florham Park, NJ 07932 USA
Tel: 1-800-WHATMAN
Fax: 1-973-245-8329
E-mail: info@whatman.com

Europe Whatman International Ltd
Springfield Mill, James Whatman Way
Maidstone, Kent ME14 2LE UK
Tel: + 44 (0)1622 676670
Fax: + 44 (0)1622 677011
E-mail: information@whatman.com

Whatman GmbH
Hahnestr. 3
D-37586 Dassel
Germany
Tel: + 49 5561 791 0
Fax: + 49 5561 791 536
E-mail: information@whatman.com

Japan Whatman Japan KK
Kenwa Building 6F 7-15
Kudan-Minami 4-chome, Chiyoda-ku
Tokyo 102-0074 Japan
Tel: +81 (0)3 5215 1240
Fax: +81 (0)3 5215 1246
E-mail: japaninfo@whatman.com

Asia Pacific Whatman Asia Pacific Pte Ltd
171 Chin Swee Road
#08-01 San Centre
Singapore 169877
Tel: +65 6534 0138
Fax: +65 6534 2166
E-mail: wap@whatman.com

Whatman®

Leaders in Separations Technology
www.whatman.com