

Adapter Collars and accessories for the Biomek™ 2000

Ensures perfect fit for automated protocols

- Provides total instrument compatibility between the Biomek 2000 and Whatman™ filtration and collection microplates
- Proper plate alignment eliminates cross contamination and the need for spacer plates
- Available in two sizes to fit a wide range of Whatman microplates

GE Healthcare, consistently setting the industry standard for microplate performance and quality, introduces Whatman Microplate Adapter Collars for use on the Biomek 2000. Designed specifically for today's automated liquid handling systems, the Adapter Collars eliminate many of the problems common to generic vacuum systems such as cross contamination, unnecessary collection steps and the need for spacer plates. Two sizes of Adapter Collars are available to fit the range of Whatman specialty filter and collection plates for versatility in laboratory automated protocols. Chemically resistant and easy to install, Whatman Adapter Collars ensure quality is maintained in a wide range of high throughput applications.

Whatman Small Adapter Collar

The Whatman Small Adapter Collar is designed for collection from any Whatman filterplate into a variety of Whatman 96-well and 384-well filterplates or collection plates (see compatibility chart).

Whatman Medium Adapter Collar

The Whatman Medium Adapter Collar is designed for collection from any Whatman filterplate including 384-well plates into 800 µl filterplates or collection plates.



Easy collar installation

Whatman Adapter Collars are similar in appearance and function to those collars provided with the Biomek 2000 instrument and are easy to install. Whatman PCR Cleanup and Plasmid Miniprep downloadable methods for BioWorks™ are available on CD or web at www.gelifesciences.com/whatman.

Technical specifications

Collar construction:	Polyurethane cast resin
Gasket material:	Firm cellular silicone
Minimum vacuum required for operation:	-2" Hg
Nominal bleed rate (chamber re-equilibration):	4" Hg/min

Ordering information

Catalog number	Description	Qty/case
7705-0120	Small Whatman Collar	1
7705-0121	Medium Whatman Collar	1
7725-0118	96-Well Filtrate Director	25
69I0030016*	PCR Cleanup 96-Biomek Protocol CD	1
69I0030017*	Plasmid Miniprep 96-Biomek Protocol CD	1

* Note: To access installation software from the Whatman web site, www.gelifesciences.com/whatman, click on protocol link.



Whatman Adapter Collars with filtrate directors eliminate cross contamination

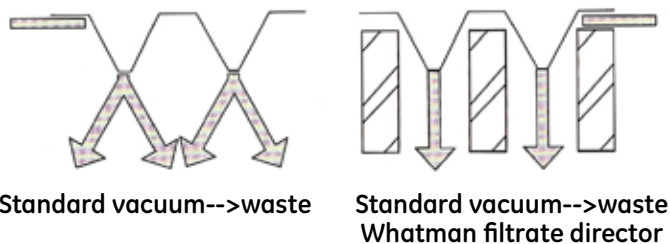
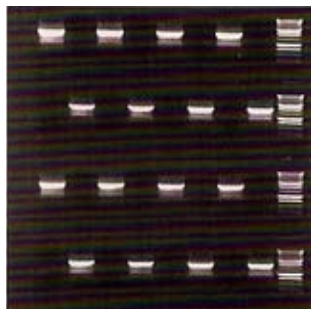


Fig 1. Whatman filtrate director

- Well segregation during vacuum to waste steps prevents cross contamination
- Open bottom allows for filtration of volumes > 700 µl
- Available in 96-well format



Amplification of eluate from an automated Whatman PCR Cleanup Protocol. A 1.9 kb PCR fragment and TE⁻¹ were processed in alternating wells of the PCR Cleanup 96-well plate on the Biomek 2000. Eluate from each well was added to reamplification reactions using nested primers (SP6 and T7) to generate a 1.8 kb product. Reamplified bands are seen in those wells that processed the 1.9 kb fragment.

Fig 2. Validated for crosstalk free processing

Whatman Filterplate compatibility with Adapter Collars

Plate type	Number of wells	Well volume	Drip director design	Footprint compatibility	Drip director penetration into collection plate
UNIFILTER™	24	10 ml	Long	Y	Y
UNIFILTER	96	350 µl	Short	Y	N
UNIFILTER	96	800 µl	Short	Y	N
UNIFILTER	96	350 µl	Mesh	Y	N
UNIFILTER	96	2 ml	Long	Y	Y
UNIFILTER	384	100 µl	Long	Y	Y

Note: Filterplates which do not have long drip directors are only recommended for vacuum-->waste protocols.

www.gelifesciences.com/whatman

GE Healthcare UK Limited
Amersham Place
Little Chalfont
Buckinghamshire, HP7 9NA, UK



Whatman Multiwell compatibility with Adapter Collars for collection

Plate type	Number of wells	Well volume	Small	Medium
UNIPLATE™	1	75 ml	Y	Y
UNIPLATE	24	3 ml	Y	N
UNIPLATE	48	1.5 ml	Y	N
UNIPLATE	96	250 ml	Y	N
UNIPLATE	96	300 ml	Y	N
UNIPLATE	96	650 ml	Y	N
UNIPLATE	96	750 ml	N	Y
UNIPLATE	96	800 ml	N	Y
UNIPLATE	384	80 ml	Y	N
UNIPLATE	384	100 ml	Y	N
UNIFILTER	96	350 ml	Y	N
UNIFILTER	96	800 ml	N	Y
UNIFILTER	384	100 ml	Y	N
UniPCR™	96	200 ml	Y	N

Note: Filterplates can be used for collection and subsequent filtration.

GE, imagination at work and GE monogram are trademarks of General Electric Company.

UNIFILTER, UNIPLATE and Whatman are trademarks of GE Healthcare companies.

All third party trademarks are the property of their respective owners.

© 2002-2010 General Electric Company – All rights reserved.

Previously published Feb. 2002.

All goods and services are sold subject to the terms and conditions of sale of the company within GE Healthcare which supplies them. A copy of these terms and conditions is available on request. Contact your local GE Healthcare Representative for the most current information.

GE Healthcare Bio-Sciences AB
Björkgatan 30
751 84 Uppsala
Sweden

GE Healthcare Europe, GmbH
Munzinger Strasse 5, D-79111 Freiburg
Germany

GE Healthcare Bio-Sciences Corp.
800 Centennial Avenue
Piscataway, NJ 08855 USA

GE Healthcare Japan Corporation
Sanken Bldg., 3-25-1, Hyakunincho
Shinjuku-ku, Tokyo 169-0073
Japan