

Whatman 96 Well Dye Terminator Removal UNIFILTER®

Remove dye terminators
with speed and accuracy.

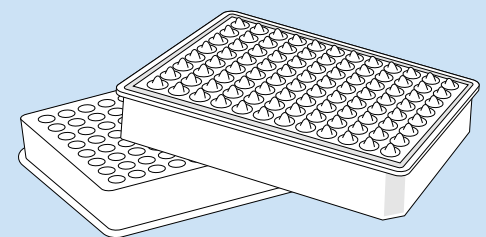
Removal of dye terminators for DNA sequencing can be an expensive, time-consuming process for a busy genomics lab. To simplify the process, choose the Whatman 96 Well Dye Terminator Removal UNIFILTER®. Used with Sephadex™, these high-quality multiwell plates—with fast-flowing filters built in—remove troublesome leftover dye terminators from DNA fragments and eliminate well-to-well crosstalk, allowing you to achieve more accurate sequencing results. With 96 wells and a rigid polystyrene frame that can withstand centrifugation, the Dye Terminator Removal UNIFILTER is an efficient, cost-effective tool for high-throughput sequencing reaction clean-up.

Features and Benefits

- **Provides long, readable fragments**
Optimal gel height eliminates common “dye blob” problem in amplification reactions.
- **Compatible with industry-standard protocols**
Protocol is optimized for Applied Biosystems BigDye® Terminator chemistry.
- **Cost-effective separation method**
Popular Sephadex™ gel filtration resin is used for separation media.
- **Rapid protocol**
96-well format and centrifugation allow purification of multiple reaction plates in parallel.
- **Incorporates high-quality filters**
Fast-flowing, high wet-strength filters are welded into the UNIFILTER.
- **Eliminates crosstalk**
Long drip director design provides clean collection of filtrate, without crosstalk.

WHATMAN CATALOG ORDERING INFORMATION

Whatman Catalog Number	Description	Size	Qty/Pack
7700–2801	Dye Terminator Removal UNIFILTER	800 µL/96 wells	25
7701–5750	UNIPLATE™ for flow through collection	750 µL/96 wells	25
7704–1001	Clear Polystyrene Lid	—	100



Load 100 µL of Sephadex™ G-50 Medium, DNA grade.
Add 800 µL diH₂O.

Leave for 3 hours



750 x g, 2 min

Apply samples into each well



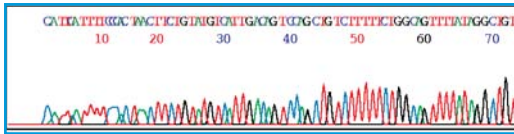
750 x g, 2 min

Collect and analyze
or concentrate

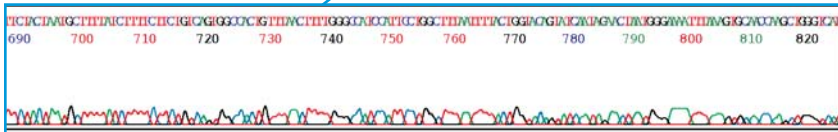
Whatman®

PERFORMANCE

There is no inhibition at smaller molecules.



Long and readable fragments.



Detection: ABI PRISM® 3100 Genetic Analyzer (80 cm capillary)

EQUIPMENT AND CONSUMABLE REQUIRED

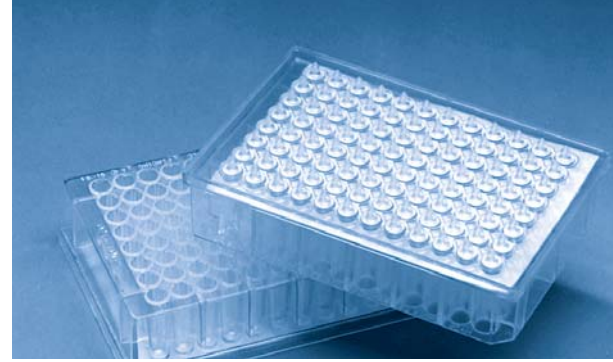
- UNIFILTER® (Whatman #7700–2801)
- Sephadex G-50 Medium DNA Grade (Amersham BioSciences #17-0045-02)
- 100 µl Column Loader (Millipore #MACL09600)
- UNIPATE™ (Whatman #7701–5750)
- 96-well collection plate
- Centrifuge capable of 750 xg with a rotor for microplates
- Vacuum centrifuge (for concentrating)

96 WELL DYE TERMINATOR REMOVAL PROTOCOL

1. Pour an excess of dry Sephadex G–50 Medium DNA grade onto 100 µL column loader.
2. Using the scraper provided, push the material into all wells and scrape the excess off the open end.
3. Place an empty dry UNIFILTER upside-down on top of the column loader. Make sure to push the plate up against the end stop, as this aligns the wells.
4. Invert both UNIFILTER and the column loader, and tap on bottom of the column loader to release the resin.
5. Place the UNIFILTER on a microplate*, and add 800 µL distilled water to each well to swell the resin. Swell at room temperature for 3 hours.
6. Place the UNIFILTER on a UNIPATE and centrifuge at 750 xg for 2 min. Discard all water collected in the UNIPATE.
7. Place the UNIFILTER on a fresh 96-well sample collection plate.
8. Carefully add sequencing reactions (SDS/Heating treated**) to the center of each well. SDS/Heat treatment is recommended to remove dye blobs. Thermal Cycler can be used: 98°C/5 min 25°C/10 min.
9. Centrifuge at 750 xg for 5 min.
10. Dry the collected sample in a vacuum centrifuge. (Collected samples can be also injected directly.)

* The microplate is used to protect drip directors of the UNIFILTER. Any 96 well microplate can be used. Absorbing material such as blotting papers should not be used.

**SDS/Heating Treatment: 1. Add 2 µL of 2.2% SDS to each 20 µL reaction sample; 2. Mix well, and heat at 98°C for 5 min.; 3. Cool down to room temperature.



Whatman Quality

Whatman is a global leader in separations technology and is known in the scientific community for providing innovative Life Science products and solutions. Our instinct for simplification accelerates the rate of discovery, reduces costs and saves time. In order to focus on the unique needs of customers, Whatman is organized into four business development units: LabSciences, BioScience, MedTech-Diagnostics and MedTech-Devices. For more information, visit www.whatman.com.

Whatman and UNIFILTER are registered trademarks and UNIPATE is a trademark of the Whatman Group. Sephadex is a trademark of Amersham BioSciences. Big Dye and ABI PRISM are registered trademarks of Applied Biosystems.

North America Whatman Inc.
200 Park Avenue
Florham Park, NJ 07932 USA
Technical Support: 1-800-922-0361
Customer Service: 1-800-631-7290
E-mail: info@whatman.com

Europe Whatman International Ltd
Springfield Mill, James Whatman Way
Sandling Road, Maidstone
Kent ME14 2LE UK
Tel: +44 (0)1622 676670
Fax: +44 (0)1622 691425
E-mail: information@whatman.com

Japan Whatman Japan KK
Daiwa Ueno Building 1F 6-10
Ueno 5-chome, Taito-ku
Tokyo 110-0005, Japan
Tel: +81 (0)3 3832 6707
Fax: +81 (0)3 3832 6457
E-mail: japaninfo@whatman.com

Asia Pacific Whatman Asia Pacific Pte Ltd
171 Chin Swee Road
#08-01 San Centre
Singapore 169877
Tel: +65 6534 0138
Fax: +65 6534 2166
E-mail: wap@whatman.com

Whatman®

Leaders in Separations Technology
www.whatman.com