

Whatman®

PCR Cleanup with 384-Well DNA Binding Filter Plates



High Purity, High Yield Binding Plate for Automated PCR Cleanup

- Easy to use protocol adaptable to most liquid handling instruments available online at www.whatman.com
- High efficiency bind-wash-elute processing with collection by filtration—simplifies automation with no cross contamination
- Highly reproducible results (< 10% CV)—consistent processing with automated methods
- DNA yields up to 7µg/well with OD260/280 > 1.8—DNA purity sufficient for sensitive downstream applications
- DNA concentrations as high as 0.5 µg/µL—minimal liquid hang-up for reduced elution volume
- Purify DNA fragments from 100bp - 10kb—> 85% recovery

The Whatman protocol for PCR Cleanup in 384-well plates is a highly efficient method for purifying double-stranded DNA fragments. The choice of DNA Binding Buffer enhances the binding of DNA while eliminating excess PCR components.

Whatman manufactures a line of DNA Binding Plates engineered for automated applications. These high quality multiwell plates feature a unique filter media for the efficient binding of DNA with purification performed quickly and easily with common buffers.

384-Well DNA Binding Filter Plates

- High DNA binding capacity
- No crosstalk between wells
- Consistent performance across the plate
- High DNA recovery
- Purified DNA can be used for DNA Sequencing and Microarray Printing
- Purification unaffected by PCR additives

Specifications	384-well
Well Capacity	100µL
Working Volume	90µL
Elution Volume Loss (Centrifuge)	< 2µL
Centrifugation Stack Height (Max)	5.85cm
Dimensions	
Length (mm)	127.89
Width (mm)	85.67
Height (mm)	14.86
DNA Binding Capacity/well*	> 7µg

*Binding in a buffer containing 20% 8 M GuHCl; 80% Ethanol (v/v)

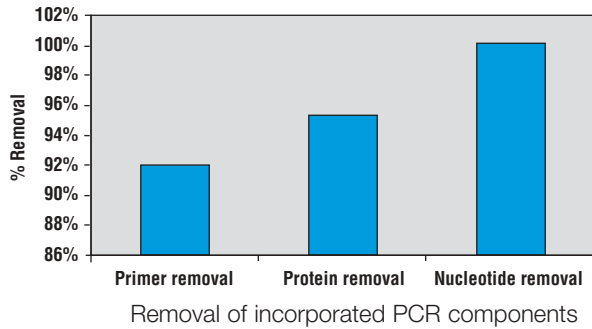
Ordering Information

Cat No.	Description	Quantity/Case
7700-2110	384-Well DNA Binding Plate	50
7701-5400	384-Well 400µL Deep Well Plate	50
7701-1100	384-Well 100µL DNA Collection Plate	50
7704-0001	Clear Polyester Plate Seals	100

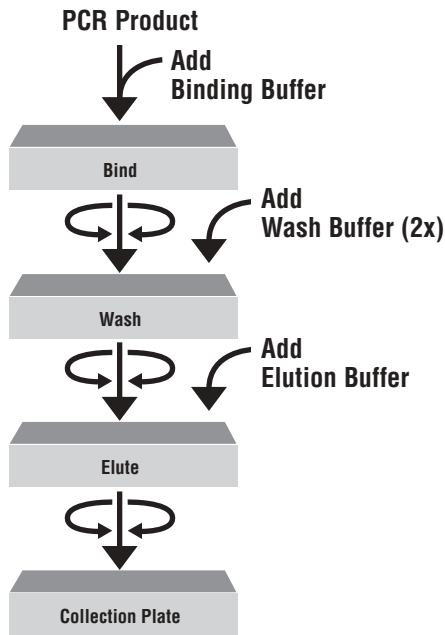
For more information on the 384-Well PCR Cleanup with DNA Binding Filter Plates
or any other Whatman products call **1.800.922.0361**
or visit our web site at www.whatman.com

384-Well PCR Cleanup Performance Characteristics

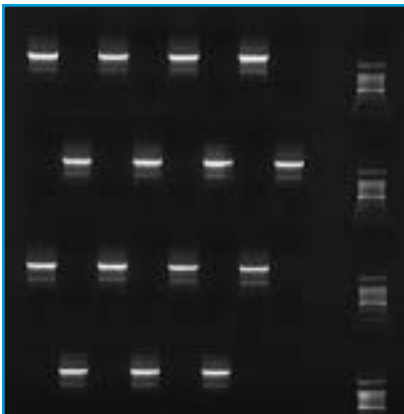
Removal of PCR Contaminants



Procedure Overview

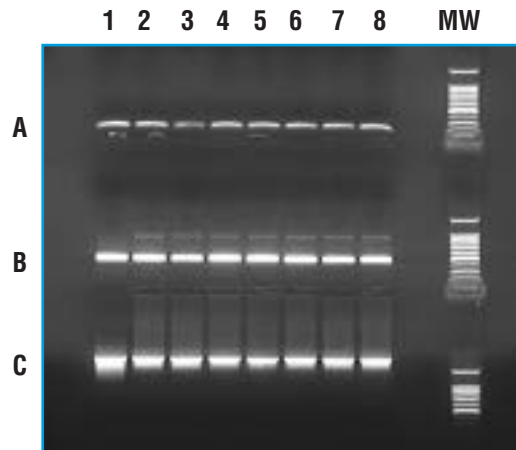


Well to Well Discrimination



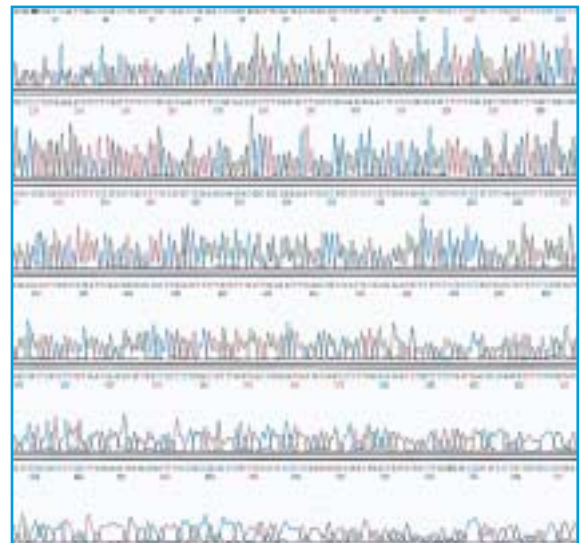
Alternating positive and negative PCR purification (1.9kb pGEM insert PCR product). 1µL of each eluate was re-amplified (25µL PCR reaction with nested primers) to increase the sensitivity of crosstalk detection. The photo is a 1% agarose gel of reamplified material.

Consistent Purification



PCR fragments before (Lane 1) and after (Lanes 2 - 8) cleanup. Row A is 213bp amelogenin, Row B is 500bp pGEM/luc and Row C is 1.9kb pGEM/luc amplicons separated on a 1% agarose gel.

High Purity Product



Electropherogram of 1.8kb PCR product

Whatman®

North America: Whatman Inc. 9 Bridewell Place Clifton, NJ 07014 • Technical Support: 1-800-922-0361 • Customer Service: 1-800-631-7290 • Outside US: 973-773-5800 • Fax: 973-773-0168 • E-mail: info@whatman.com
 Europe: Whatman International Ltd Whatman House St Leonard's Road 20/20 Maidstone Kent ME16 0LS England • Tel: +44 (0)1622 676670 • Fax: +44 (0)1622 677011 • E-mail: information@whatman.co.uk
 Japan: Whatman Japan KK Daiwa Ueno Building 1F 6-10 Ueno 5-chome Taito-ku Tokyo 110-0005 Japan • Tel: +81 (0)3 3832 6707 • Fax: +81 (0)3 3832 6457 • E-mail: japaninfo@whatman.co.jp
 Asia Pacific: Whatman Asia Pacific Pte Ltd 171 Chin Swee Road #08-01 San Centre Singapore 169877 • Tel: +65 6534 0138 • Fax: +65 6534 2166 • E-mail: wap@whatman.com.sg